



HERRAJES PUERTAS CORREDERAS A SUELO

BOTTOM SLIDING GATES HARDWARE | FERRURES PORTES COULISSANTES AU SOL | FERRAGENS PORTAS DE CORRER



Polea nylon canal "U" 20 mm con caja
Nylon wheel with box | Galet nylon en applique | Polia nylon com caixa

Cod.	Medidas - Dimensions	
NEW 227	60x20	12
312	80x20	12
313	90x20	9
314	100x20	8
315	120x20	6
316	150x20	2
317	200x20	4
Inox Stainless Steel		AISI 303-304
NEW 703	60x20	6
741	80x20	6
743	100x20	4
744	120x20	2



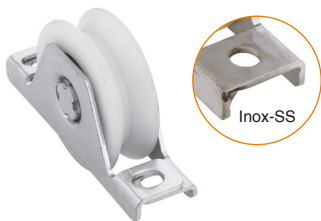
Polea nylon canal "V" 20 mm con caja
Nylon wheel with box | Galet nylon en applique | Polia nylon com caixa

Cod.	Medidas - Dimensions	
311	80 V	12
318	90 V	9
319	100 V	8
320	120 V	6
321	150 V	2
Inox Stainless Steel		AISI 303-304
747	80 V	6
749	100 V	4
750	120 V	2



Polea nylon canal "U" 20 mm encastrar
Nylon wheel to fit | Galet nylon à encastrer | Polia nylon de encastrar

Cod.	Medidas - Dimensions	
NEW 224	60x20	12
218	80x20	10
212	90x20	10
213	100x20	8
214	120x20	4
Inox Stainless Steel		AISI 303-304
NEW 699	60x20	6
752	80x20	6
753	90x20	6
754	100x20	4
755	120x20	2



Polea nylon canal "V" 20 mm encastrar
Nylon wheel to fit | Galet nylon à encastrer | Polia nylon de encastrar

Cod.	Medidas - Dimensions	
219	80 V	10
215	90 V	10
216	100 V	8
217	120 V	4
Inox Stainless Steel		AISI 303-304
756	80 V	6
757	90 V	6
758	100 V	4
759	120 V	2



Polea nylon canal "U" 20 mm con soporte
Nylon wheel to weld | Galet nylon à souder | Polia nylon com suporte

Cod.	Medidas - Dimensions	
NEW 509	60x20	12
354	80x20	12
382	90x20	12
383	100x20	10
384	120x20	6
Inox Stainless Steel		AISI 303-304
NEW 583	60x20	6
760	80x20	4
761	90x20	6
762	100x20	4
763	120x20	2

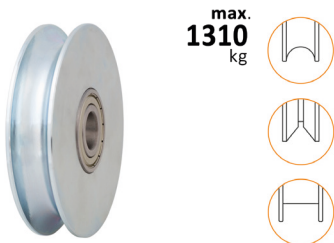


Polea nylon canal "V" 20 mm soporte
Nylon wheel to weld | Galet nylon à souder | Polia nylon com suporte

Cod.	Medidas - Dimensions	
353	80 V	12
385	90 V	12
386	100 V	10
387	120 V	6
Inox Stainless Steel		AISI 303-304
764	80 V	4
765	90 V	6
766	100 V	4
767	120 V	2

Herrajes correderas pesadas

Heavy duty sliding doors | Portes coulissantes lourdes | Portas corrediças pesadas



max.
1310
kg



Polea canal 20 mm doble rodamiento
Double bearing wheel | Galet double roulement | Polia dois rolamentos

Cod.	Medidas - Dimensions	
1081	120x20 U	6
1092	150x20 U	4
356	200x20 U	4
120	250x20 U	3
121	300x20 U	1
122	320x20 U	1
1091	150x20 V	4
3563	200x20 V	4
87902	200x20 Cuadrada	4



max.
1200
kg



Tandem doble 120 mm
Twin wheels 120 mm | Tandem double 120 mm | Tandem duplo 120 mm

Cod.	Medidas - Dimensions	
871	120x20 U	2
872	120x20 V	2
873	120x20 Cuadrada	2
874	120x16 U	2



max.
2000
kg



Tandem doble 200 mm
Twin wheels 200 mm | Tandem double 200 mm | Tandem duplo 200 mm

Cod.	Medidas - Dimensions	
877	200x20 U	1
878	200x20 V	1
879	200x20 Cuadrada	1